

Introduction

► Feature

- Line pull: 9,000 lb first layer
- Synthetic rope: 10mm × 30.5m synthetic rope SK75
- Brake: Full Load Holding Proprietary Cone Brake
- Clutch: Lift and turn T Bar to activate free spool
- Control: Handheld pendant switch

► Unpacking

- Winch assembly..... 1 pc
- Separate Solenoid Box..... 1 pc
- Remote control..... 1 pc
- Synthetic rope with clevis hook..... 1 pc
- Hawse fairlead..... 1 pc
- 6' 2 gauge battery lead..... 1 pc

► Read this manual carefully

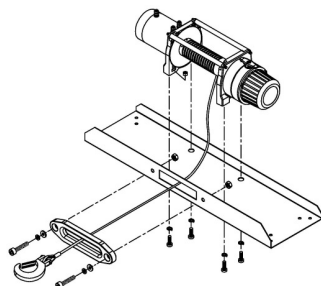
Carefully read and understand this manual before operating the winch. Careless winch operation may result in personal injury, danger to others and or damage to property

Installation

Before using the winch ensure all electrical components are in good condition and all connections are sound.

► Winch and Hawse fairlead mounting

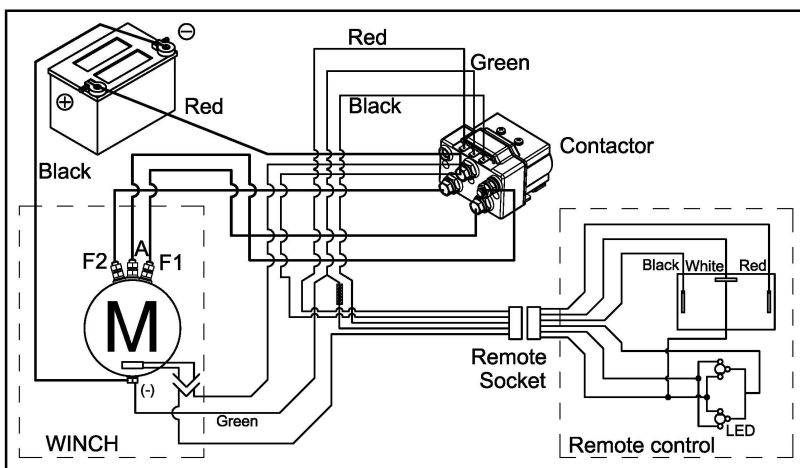
- It is important that the winch is mounted on a flat and hard surface or mounting channel to ensure the motor, drum and gearbox housing align correctly.
- Neither the hawse guide or the solenoid box mount to the winch directly.



- The synthetic rope shall be wound in an under-wound orientation only.
- Four (4) M10 x 1.50 pitch 8.8 grade high tensile steel bolts must be used in order to sustain the loads imposed on the winch mounting.

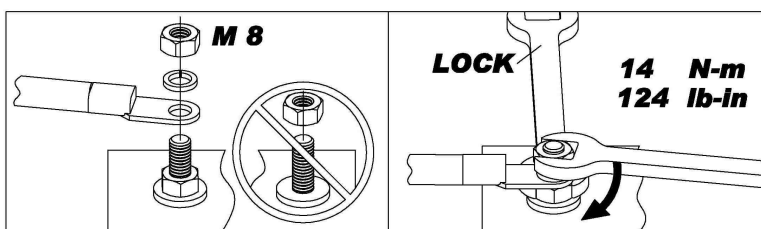
► Wiring Diagram

Attach the black lead firmly to the negative (–) battery terminal and red lead to the positive (+) battery terminal. Voltage drop at the winch motor must not exceed 10% of the nominal voltage of 12/24vdc.



► Correct method to tighten the motor & contactor nuts

1. Hold the lower nut on the stud and tighten the upper nut clockwise.
2. The torque setting for the nut is 124 lb-in.



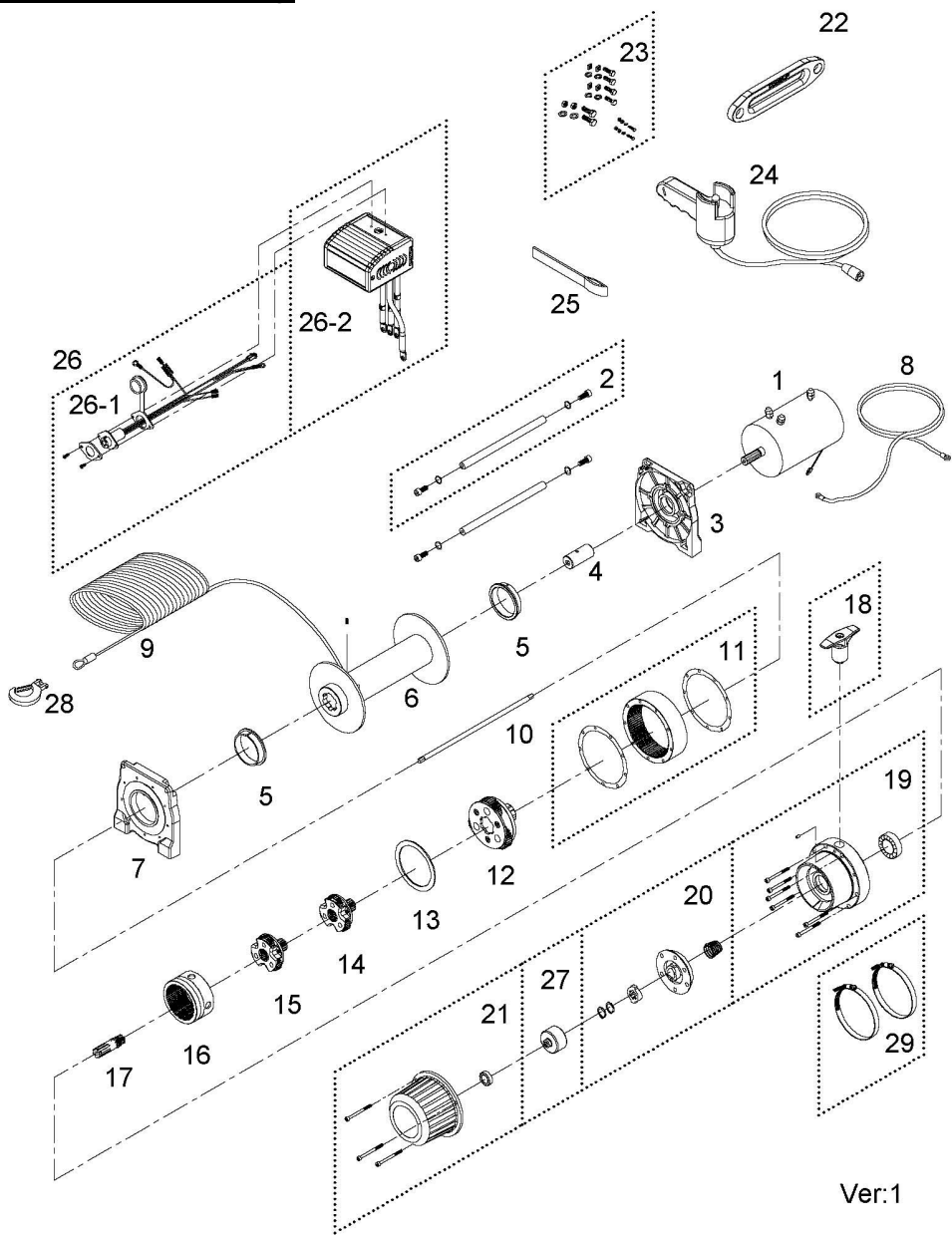
Warning

- The winch is not to be used for transporting or lifting of personnel.
- The rated line pull shown is based on the first layer of rope on the drum.
- The rope shall remain with at least 10 wraps on the drum at all times
- The manufacturer is not responsible for damage to the synthetic rope

Parts List

Item No.	Description	Part No.	Qty
1	Motor 12V	881294	1
	Motor 24V	881295	
2	Tie bar kit	880003	2
3	Motor support rack	880004	1
4	Motor coupling	880005	1
5	Drum bushing	880006	2
6	Drum kit	881521	1
7	Gearbox support rack	880008	1
8	Grounding lead	880009	1
9	Synthetic rope	882025	1
10	1 st shaft	880011	1
11	3 rd ring gear kit	880012	1
12	3 rd stage carrier	880013	1
13	3 rd bushing	880014	1
14	2 nd stage carrier	880015	1
15	1 st stage carrier	880016	1
16	1 st & 2nd ring gear	880017	1
17	1 st pinion kit	880018	1
18	Clutch kit	881303	1
19	Gear box kit	880020	1
20	Cone brake disc kit	880021	1
21	Brake cover kit	880022	1
22	Hawse fairlead	881061	1
23	Mounting hardware	880024	1
24	Remote control	880126	1
25	Handsaver strap	880026	1
26	Control box 12V	881164	1
	Control box 24V	881165	
26-1	Remote socket kit 12V	881373	1
	Remote socket kit 24V	881374	
26-2	Control pack 12V	881400	1
	Control pack 24V	881401	
27	Brake clutch base	881100	1
28	Clevis hook	882477	1
29	Clamp	882160	2

Winch Assembly



Ver:1